



Lennox Road, Walthamstow, London

This well-presented family home offers a practical and versatile layout across two floors, ideal for modern living. The ground floor features a bright and spacious reception room, a generously sized kitchen with ample room for dining, and useful storage space. There is also a convenient ground floor bathroom.

Upstairs, the property comprises three well-proportioned bedrooms, offering flexibility for families, guests, or home working, along with an additional bathroom.

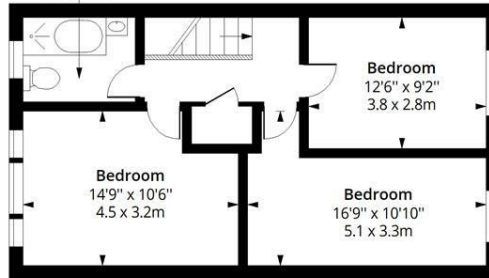
Externally, the home benefits from both front and rear gardens, providing excellent outdoor space for relaxing or entertaining, as well as a separate shed for additional storage.

Situated in a popular residential location, the property is well suited to families and buyers seeking a comfortable home with good living space and outdoor areas.

- Three Bedroom Family Home
- Set Across Two Floors
- Private Rear Garden
- Downstairs WC
- Nearby Local Transport Links
- 0.5 Miles To Walthamstow Central Station
- EPC Rated D
- 1122 Sq Ft - 104.23 Sq M

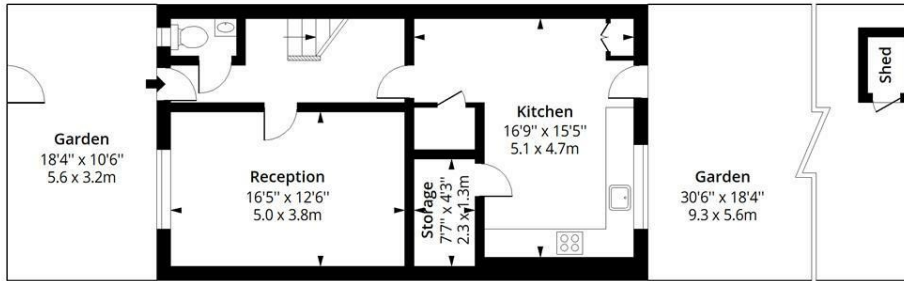
£550,000

8'2" x 5'11"
2.5 x 1.8m



First Floor

Floor Area 565 Sq Ft - 52.49 Sq M



Ground Floor

Floor Area 557 Sq Ft - 51.75 Sq M

Lennox Road E17



Approx. Gross Internal Area
1122 Sq Ft - 104.23 Sq M



Measured according to RICS IPMS2. Floor plan is for illustrative purposes only and is not to scale. Every attempt has been made to ensure the accuracy of the floor plan shown, however all measurements, fixtures, fittings and data shown are an approximate interpretation for illustrative purposes only. 1 sq m = 10.76 sq feet.

